



Hewlett Packard
Enterprise

Brochure



Solutions that transform

Get the certifications you need to deliver the IT outcomes
your customers want

84%

of surveyed professionals said that their HPE certifications increased their value with their employer.¹

Success today depends on the ability to turn ideas into value faster than the competition. HPE Partner Ready Certification and Learning can equip you and your team with the knowledge, skills, and continuous learning you need to capitalize on new opportunities and help customers accelerate time to value.

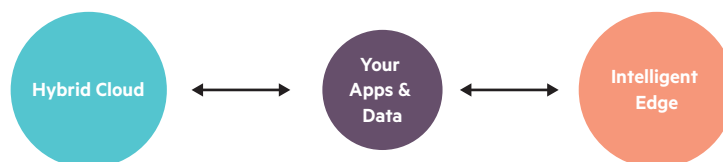
Accelerate IT transformation and innovation

As organizations look for new ways to increase agility, harness more data, and drive digital transformation, they turn to hybrid cloud strategies, shifting workloads to the edge, and changing the way they purchase and consume IT.

You and your team need certified skills and training around new applications, data, and the optimization of current IT environments. Only with the right skills and training can you help your customers accelerate IT transformation, innovation, and time to value.

Achieve competency in today's key skill areas

Today, top IT professionals are gaining new skills around making **hybrid cloud** simple, **data and analytics**, and power the **Edge**. HPE Partners can get the sales tools and technical skills they need to lead the conversation and deploy solutions within these two domains.



Tools such as videos, sales play cards, field guides, TekTalks, reference architectures, and success stories are all available to you through the Partner Ready Portal. And through HPE Partner Ready Certification and Learning, you can access the training, skills, and certification you need to:

- Deliver the business outcomes customers care about.
- Empower customers to transition their business.
- Expand your professional connections, and advance your career.

“The enterprise of the future will be edge-centric, cloud-enabled, and data-driven.”

– Antonio Neri, HPE President and CEO

¹ Survey of HPE-certified learners, September 2018.





HPE Partner Ready Certification and Learning provides avenues for skills exploration, training, and validation

| Explore | Learn | Validate |
|--------------------------------|-----------------------------------|---|
| • Free education | • Classroom learning | • Professional certification |
| • Personalized learning plans | • Virtual instructor | • Fast-track for certification holders |
| • Self-study with HPE Press | • Web-based | • HPE invitation-only events |
| • Community and HPE user group | • Hands-on and self-directed labs | • Competency practice validation ² |
| • Top recommended training | • Simulators and emulators | |

Certified HPE professionals feel that their credentials open the door to new opportunities and advancements in their field.¹

HPE Partner Ready Certification and Learning—empower your customers, drive your career

HPE Partner Ready Certification and Learning can open doors by providing you and your team with the most sought-after IT skills and knowledge. Get the hands-on experience you need to start quickly, and learn how to design solutions that increase your value to your customers and your employer.

HPE Partner Ready Certification and Learning gives you:

- Certifications that validate your skills and knowledge so you know you have what it takes to excel in your career
- Advanced HPE certifications and the know-how and respect that comes with them
- Digital Badges to electronically verify your certifications on social platforms such as LinkedIn, Facebook, and Twitter
- Knowledge and skills around technologies, products, and solutions driving customer change
- Training where and how you want it: self-paced web learning, traditional classroom, video on-demand, virtual instructor-led, hands-on and self-directed labs, HPE Press study guides and official practice exams, simulators and emulators, or dedicated on-site training
- A curriculum of unmatched breadth and depth that capitalizes on HPE's IT solution expertise
- Personalized learning plans to fit with your expertise, job role, and interests
- A supportive global community of IT professionals

² For HPE Partners achieving specializations.



Information at your fingertips

Go to mylearninghpe.com and log in using your HPE Passport credentials, or create your login.

Visit **My Learning Portal** to find a variety of learning opportunities, many of them offered free of charge. From there, you can start working on your learning plan or path to certification.

The best of **HPE training on YouTube**. Curated videos on the latest HPE solutions.

Explore

You can begin your HPE Partner Ready Certification and Learning journey by heading over to the **My Learning Portal**—your personalized IT skills resource. There, you can find options that fit your role and areas of interest, explore multiple training resources and career paths, and benefit from a wide range of free content—all from your own desk. Through the My Learning Portal, you can:

Get the right training. You'll find a wealth of detailed information about a variety of IT topics—much of it available at no charge to you. Whether short and informative YouTube videos, more in-depth Top Recommended Training, or multi-day certification training, you'll find the right resources to keep you ahead of the game.

Subscribe to a learning plan. Explore the My Learning Plans area in your My Learning Portal. Create a personalized plan based on your interests and career objectives, or select a curated plan in a technology area of interest to you. As you advance, your plan will keep you up-to-date and progressing efficiently.

Succeed with self-study. Self-study guides, self-directed labs, and exam prep materials from HPE Press let you learn when and where you want, at your own speed. HPE Press materials also serve as handy reference guides while on the job. See the wide variety of study materials—including free content—at hpepress.hpe.com.

Join the community. When you join HPE Partner Ready Certification and Learning, you enter a unique global community with hundreds of thousands of members. Engineer or associate, architect or integrator, support or sales staff, you'll find peers and partners to connect with. Forums, blogs, special event meetings, and other tools help you network with IT pros and HPE experts for guidance, problem-solving, best practices, and expertise. You can get to know HPE-certified professionals, and even find expert help for passing certification exams.

My Learning Portal—your one-stop skills shop

- Create your own learning plan
- View the certifications recommended specifically for you
- Find free and fee-based learning opportunities
- See which benefits you are eligible for

Hewlett Packard Enterprise

Overview Training Benefits Contact Us Sign Out

Overview

My Learning

Welcome

HPE Learner ID HA60074347

English

Become the expert on HPE's leading storage solutions

Technology moves fast. That's why being certified in HPE's newest, leading storage technologies assures your customers that you have the right skills and knowledge to turn requirements into solutions. Check out the new storage certifications.

[Find out more](#)

My Alerts

Congratulations, a digital badge of your HPE certification is now available

Digital badges are a great way for customers to see and verify the HPE-based skills and knowledge you have achieved.

[Find out more.](#)

Prepare your organization for E-rate business opportunities

Whether you are new to E-rate or an industry expert, Aruba's 2019 program will position your practice to win its share of the E-rate funding.

[Find out more.](#)

Action requested: Update your Areas of Interest (AOIs) today

AOIs have been updated with more categories so that you get exactly the HPE content you want. Check out the new AOIs listed under My Interests. Update today.

Got a new cert? Get your digital badge today

Differentiate yourself and allow others to see and verify the skills and knowledge you've earned.

[Learn more.](#)

My Learning Plans

You have added the following content to your Learning Plans.

Introduction to HPE
Not Applicable / Sales / Entry

[View and create My Learning Plans](#)

My Top Recommended Training

Based on your areas of interest, we recommend the following offerings.

[Introducing the HPE ProLiant DL325 Gen10 Server \(13 min\)](#)
[Gen10 Portfolio Foundations \(15 min\)](#)
[Gen10 Security POD \(15 min\)](#)
[MCx86 Solutions and Services Update-31May2018 \(52 min\)](#)

My Benefit Level

ACTIVE LEARNER ATP ASE MASTER ASE

☒ Affiliate ☒ Product Certified

Your program benefits level is: **Master ASE**

ACTIVE LEARNER ASSOCIATE PROFESSIONAL EXPERT

Your HPE Aruba program benefits level is: **Expert**

[Learn more about our progressive benefits.](#)
[Access The Learning Center](#)

Partner Certification Status

[Knowledge Credits Resources](#)
[View My Learning Tasks](#)
[Find my Partner Education Manager](#)
[Onboarding Guide for Partner Employees](#)

My Interests

Please select your job role and areas of interest, then click [Update My Interests](#) below.

Job role

☒ Sales
☒ Technical

Areas of interest

☐ Advisory and Professional Services
☒ Compute Solutions
☒ Data Center Networking
☒ Edge Compute
☒ Everything as a Service
☒ Financial Services
☒ High Performance Computing/ Artificial Intelligence

35+

certifications covering servers,
networking, storage, software-defined
infrastructure, sales, and more.

Learn

Your customers rely on your having up-to-date knowledge and skills. Use your My Learning Portal to quickly create your personalized learning plan and start gaining valuable IT skills you can use immediately.

Get training in server, storage, data center (hybrid cloud), networking, mobility, and infrastructure management, as well as fast-growing fields such as Composable Infrastructure, hybrid infrastructure and cloud, software-defined networking, the edge, and the Internet of Things.

Train the way you want to

Choose from:

- **In-person, instructor-led classroom education** at hundreds of authorized training centers worldwide
- **Remote or online instructor-led training** for the working student who can commit to scheduled training
- Self-paced learning through the use of study guides and self-directed labs **available through HPE Press**

Get real-world experience

Gain experience and skills via:

- Hands-on labs in a classroom setting
- Remote, real-time access to labs equipped with live IT equipment setups and hardware
- Online simulators and emulators

Learning and certifications spanning a wide range of technologies

- Volume compute
- Compute solutions
- High-performance computing (HPC) / artificial intelligence (AI)
- Storage
- Data center networking
- Software-defined and cloud
- Mobile and campus networking
- Edge compute
- Operational Support Services
- Advisory and Professional Services
- Everything as a Service (XaaS)
- Financial services

Know it. Sell it. Seismic.

With Seismic, HPE Partners can access the latest news and sales materials aligned to top selling priorities. Quickly find the right sales content to help your customers turn ideas into value. Leverage curated assets, powerful collaboration tools, and customized content to build stronger relationships with customers and support the selling of HPE Hybrid Cloud and edge innovations delivered and maintained by you, our valued partner, or our HPE Pointnext teams.



87%

of HPE Partners agree or strongly agree that ongoing training is essential if professionals want to successfully meet customer IT needs.¹

Validate

HPE certifications are some of the most respected in the industry. According to a recent survey of HPE-certified Partners, 76% agree or strongly agree that their customers have increased confidence in their work because they hold HPE certifications.¹

Advance through multiple levels

The HPE Partner Ready Certification and Learning Program offers certification for technical and sales professionals. Technical certifications allow progression from entry-level to master.

HPE certification levels

| Certification | What it means |
|--|---|
| HPE Master Accredited Solutions Expert (Master ASE) | The pinnacle of our certifications. This individual has demonstrated expert technical skills in advanced enterprise solutions, combined with IT business acumen. The Master ASE can align information technology to an organization's financial and business goals, and is able to design and implement complex solutions—from the proposal stage to live deployment. |
| HPE Accredited Solutions Expert (ASE) | Advanced level certification. Indicates expert technical skills for proposing, designing, implementing, configuring, administering, or supporting enterprise IT solutions. |
| HPE Accredited Technical Professional (ATP) | Introductory level certification. The individual understands the fundamental concepts, terms, technologies, and processes needed to implement and design HPE solutions. |
| HPE Product Certified | Validates that you can recommend and demonstrate a specific HPE product or solution. It also shows that you understand the benefits and strengths of the solution or product. |
| HPE Sales Certified | Indicates skills to harness HPE tools and resources to effectively uncover top customer needs, identify and validate the best sales opportunities, and leverage the solution areas that customers care about most. |

Aruba certification levels

| Certification | What it means |
|-------------------------------------|--|
| Aruba Certified Expert | Aruba's top-level achievement. This validates that you have the rich technical expertise to install, configure, and support mobile-first networks. |
| Aruba Certified Professional | This level validates that you can build mobile-first network solutions. This means you know how to design, implement, and manage the modern mobile-first network for enterprise. |
| Aruba Certified Associate | This level validates that you have foundational knowledge to build mobile-first networks. This means you can recognize and recommend the appropriate Aruba products and solutions based on customer needs. |



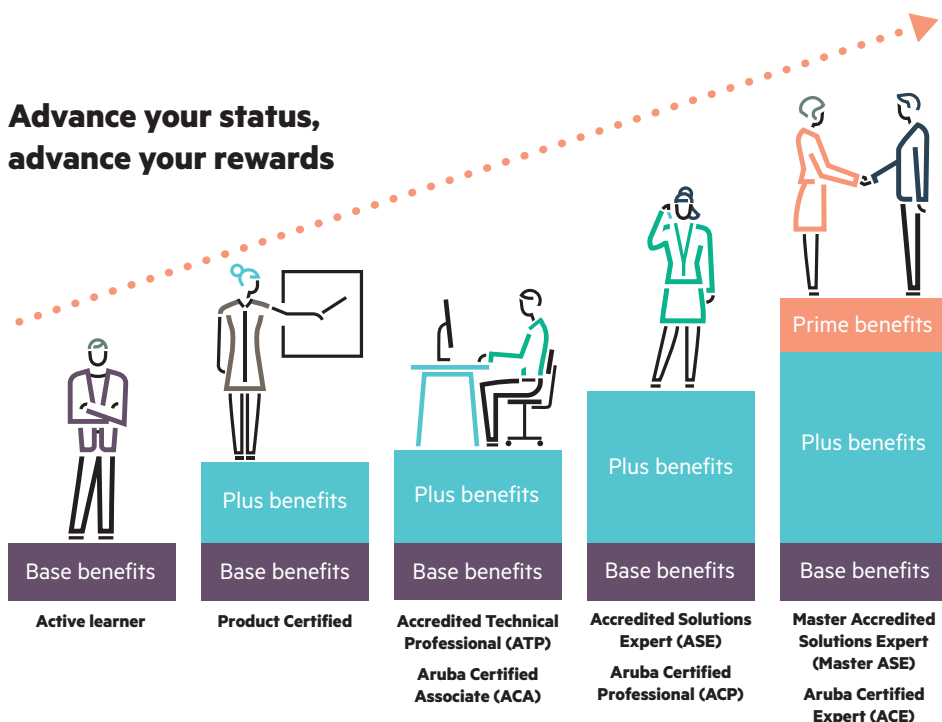
When you join HPE Partner Ready Certification and Learning, you enter a unique global community with hundreds of thousands of members. Expert or professional, architect or integrator, support or sales staff, you'll find peers and partners to connect with. As you progress through the levels of certification, you'll gain access to a broader range of benefits.

HPE Master ASEs are known and respected for their vast technical knowledge and skills.

Get progressive benefits and rewards

The Certification and Learning program rewards you with progressively greater benefits and rewards. These can include invitation-only seminars and webinars, along with access to HPE technologists and other HPE resources. You may also qualify for discounts on merchandise and HPE Press publications.

Advance your status, advance your rewards



Affiliate certifications for HPE partners

If you're employed by an HPE reseller, you can acquire HPE Affiliate (partner-restricted) certifications. Exclusively for HPE channel resellers, these certifications are designed to validate the skills required to meet HPE partner program and service support qualifications.


How to get started

Ready to equip yourself with the knowledge and skills you need to lead the IT conversation, drive bigger wins, and deliver the business outcomes your customers want? To get started:


1. Register for our [program](#).
2. Explore free web-based training, guided learning plans, continuous learning activities, and HPE certifications in the [My Learning Portal](#).

Learn more about HPE's certification and learning at certification-learning.hpe.com






Make the right purchase decision. Click here to chat with our presales specialists.



Share now



Get updates

